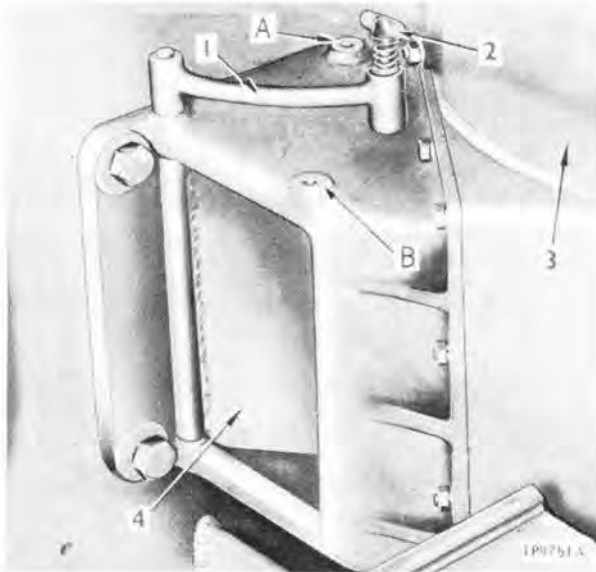


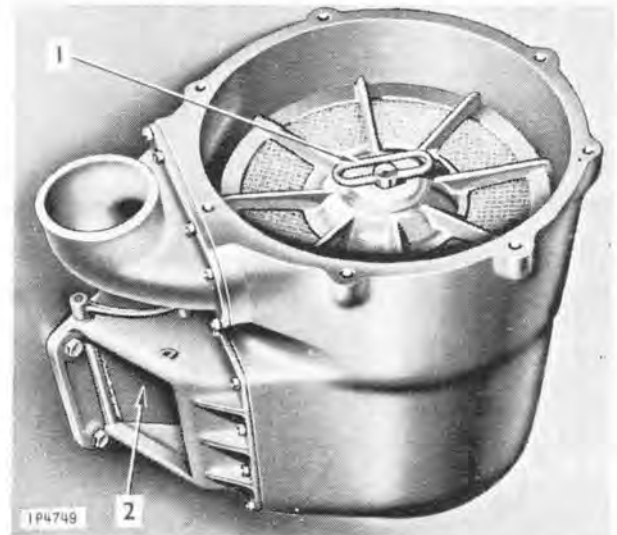
- | | | |
|---------------------------------|---|---------------------------------------|
| 1 Headlamps | 12 Main and charging set oil filters access | 22 Rangefinder housing |
| 2 Vehicle lifting eye | 13 Transmission compartment covers | 23 Fire extinguisher |
| 3 Driver's access door | 14 Vehicle lifting eye | 24 Aerial base |
| 4 Gunner's access door | 15 Gun crutch | 25 Turret lifting eye |
| 5 Smoke dischargers | 16 Infantry telephone | 26 Smoke dischargers |
| 6 Aerial base | 17 Coolant level access | 27 Operator's access door |
| 7 Fire extinguisher | 18 Turret lifting eye | 28 Turret lifting eye |
| 8 Rangefinder housing | 19 Engine compartment covers | 29 Aerial base |
| 9 Fire control turret | 20 Commander's machine gun mounting | A Alternative position for gun crutch |
| 10 Commander's access door | 21 Cable reel | |
| 11 Charging set dipstick access | | |

Fig 5 Plan of vehicle



1 Operating lever 3 Air cleaner
2 Wingbolt 4 Door
A Inlet from fighting compartment
B Inlet from engine compartment

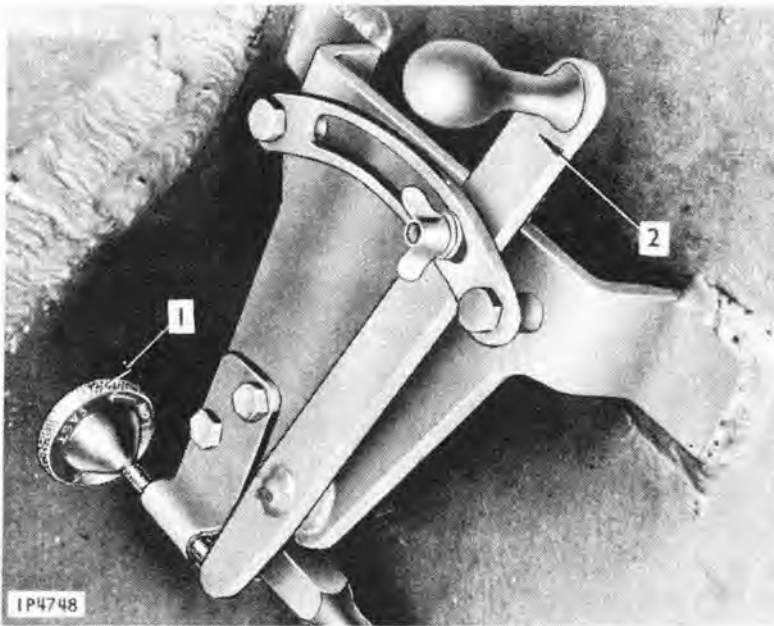
Fig 45 Air cleaner door



1 Element lifting handle
2 Air cleaner door

Fig 46 Air cleaner, cover removed

- (viii) Fill the oil bath casing up to the level indicator on the centre tube (OMD-110 approx. $1\frac{1}{2}$ gal). *Do not overfill.*
- (ix) Replace the element and tighten the loop handle. Replace the top cover and tighten the wingbolts.
- (x) Traverse the turret until the R.H. air cleaner is accessible.
- (xi) Slacken the clips on the hoses of the charging set air cleaner and remove the elbow pipe (screwdriver).
- (xii) Release the clip securing the stowage bin to the cover of the main engine air cleaner. Remove the bin by sliding it forward until clear of its locating pin.
- (xiii) Slacken the three setscrews ($7/16$ in. A/F spanner) securing the charging set air cleaner to the cover of the main engine air cleaner. Turn the charging set air cleaner anti-clockwise, then remove it.
- (xiv) Proceed as for the L.H. air cleaner (ii) to (ix).
- (xv) Replace the charging set air cleaner and tighten the setscrews.
- (xvi) Fit the small stowage bin on its locating pin and secure the two clips.
- (xvii) Refit the hose connectors and elbow pipe, then tighten the hose clips.



- 1 Hand throttle control screw
- 2 Throttle lever

Fig 101 Hand throttle control

To start by towing

478. During this operation the commander of the TOWING vehicle will issue all instructions and give all signals.

- (a) Ensure that the towing ropes are correctly fitted.
- (b) Ascertain that the engine is free by turning it by hand.
- (c) Ensure that the towing vehicle is in the lowest gear.
- (d) Ensure that the towed vehicle is in a high gear (Fig 102).
- (e) Check that the brakes are released on the towed vehicle.

(a) Z52 Gearbox (b) Z5R Gearbox

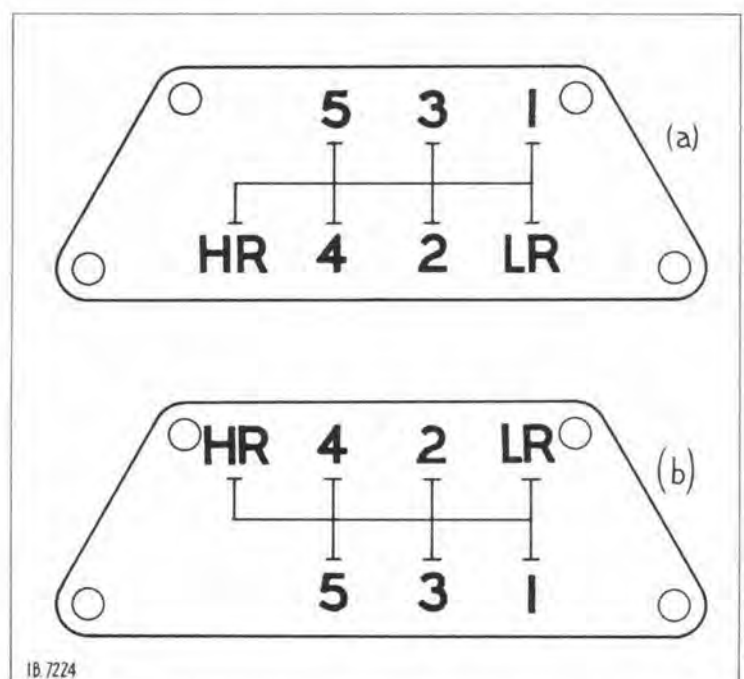
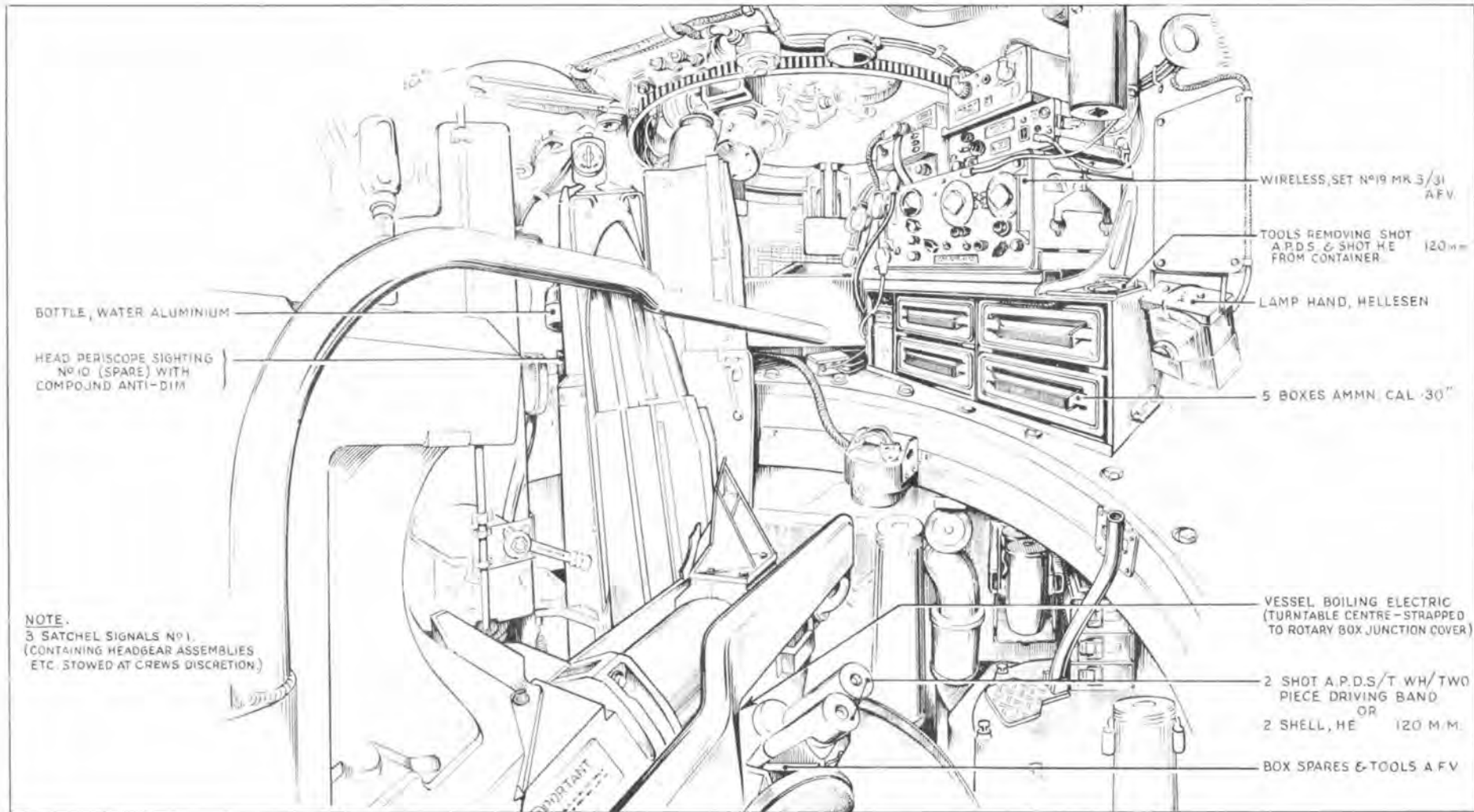


Fig 102 Gear lever positions



STOWAGE SKETCH
INTERIOR: R/H & REAR OF TURRET & TURNTABLE.