

SCHOOL OF TANK TECHNOLOGY

PRELIMINARY REPORT ON GERMAN LIGHT TANK

Pz. Kw. 1. (Model A.)

Examined at Farnborough. (E.W.No: 2235)

6th August, 1942.

Examined by Major J.D.Barnes, R.T.R. and Capt. R.E.W.Cole.

(1) Type Pz. Kw. 1. (Model A.) Chassis No: Not known.

Year of manufacture: Not known.

(2) Identification Markings

On turret - R. 12 - Colour - Light sand.

(3) General Condition

The vehicle is a "non-runner". Leading road wheel deficient on off-side. To recondition a fair amount of work is required.

(4) Weight Five tons (Unladen)

(5) Speed

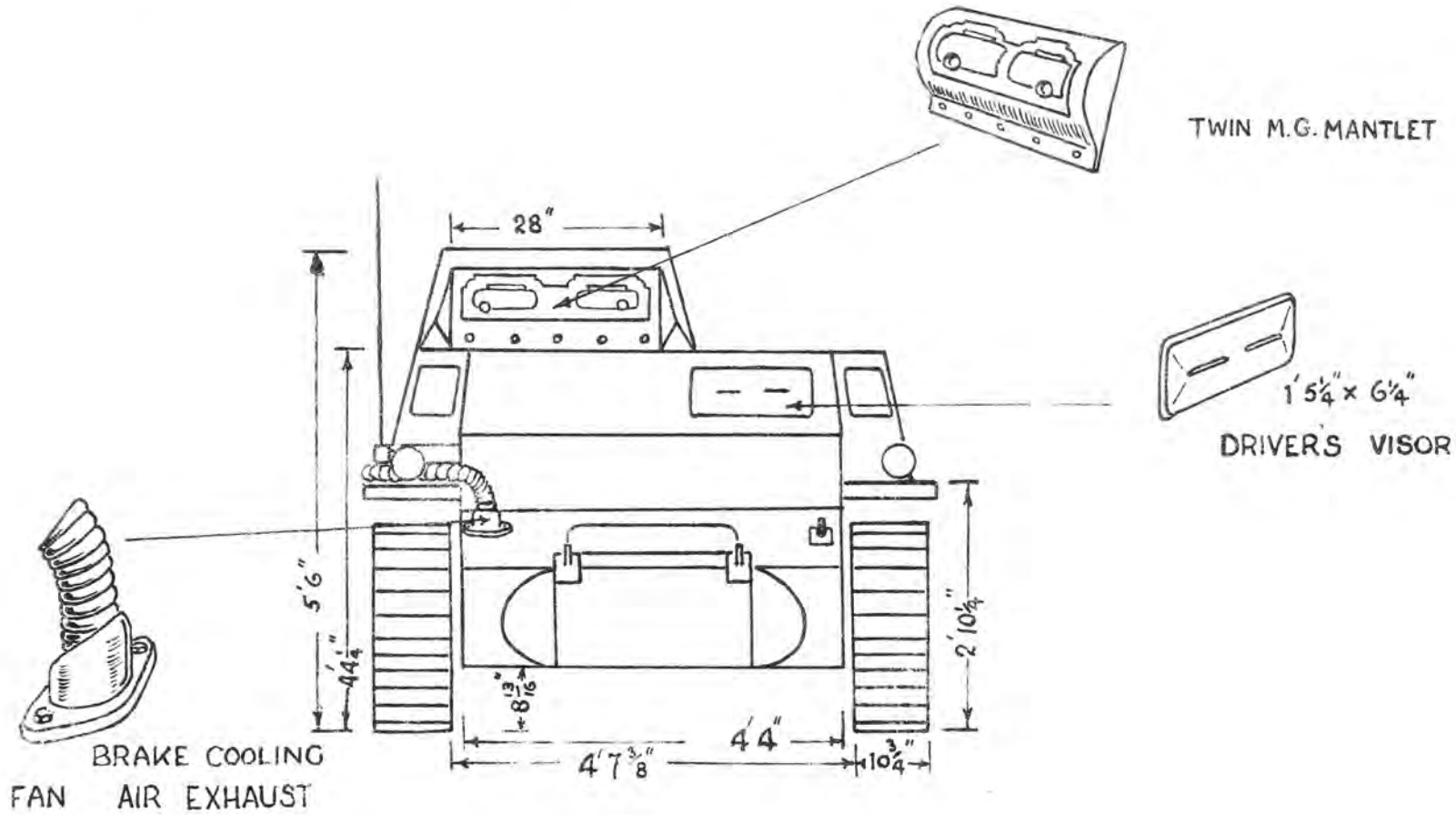
Not tested. Speedometer marking gives maximum speed on fifth gear as 42 k.p.m., (26 m.p.h.)

(6) Crew Two:- Gunner/Commander. - Driver.

(7) Dimensions

Length (overall)	13' 0"
Width (")	6' 9"
Height (")	5' 7"
Clearance	9 $\frac{3}{4}$ "
Ground Contact	8' 5"
Track Centres	5' 6"

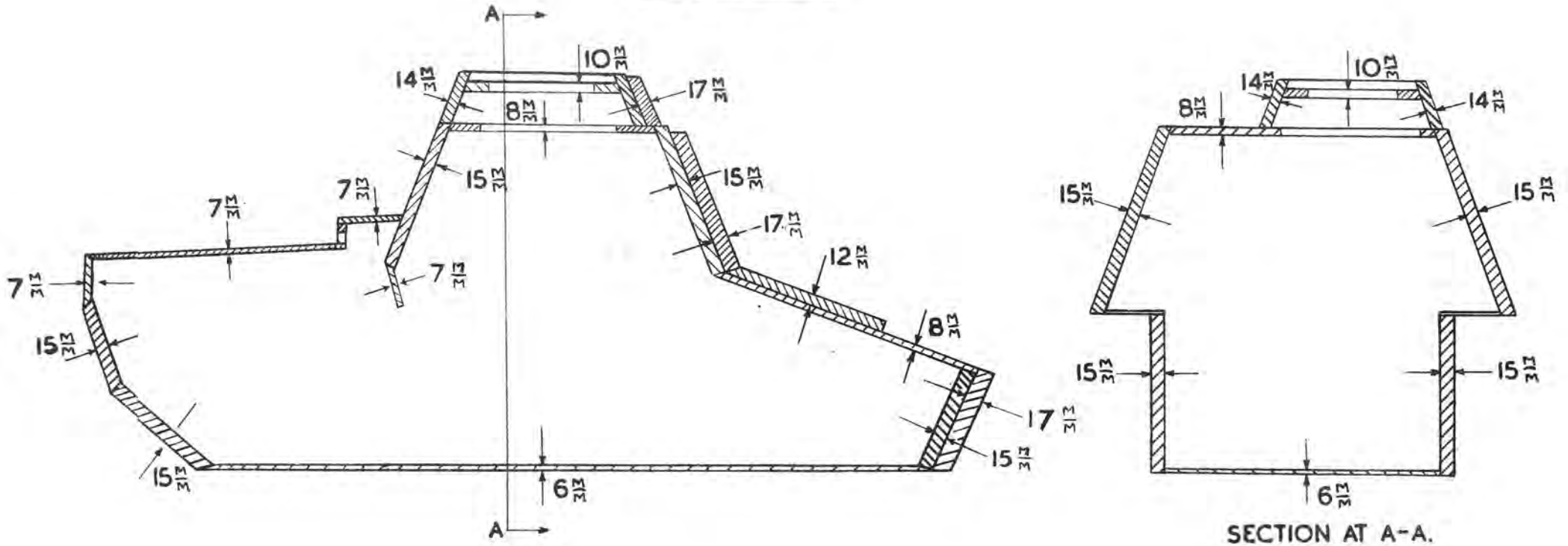
Pz.Kw1 (MODEL A)



— FRONT VIEW —

Pz. Kw. 1 (MODEL A)
DRAWING No. 11
C.G.P. 8/42
S.T.T. 8/2/2

Pz. Kw. I.
COMMANDERS TANK.
ARMOUR PLATE.



	Pz. Kw. I.
	DRG. No. 233.
F.7.	R.C. 3/43
	ST.T. 8/2/8.

11. INSTRUMENTS AND CONTROLS

Drivers controls as in Pz.Kw.I (Model "A")

Instrument Panel - on left

Rev Counter marked V.D.O. Graduated 300 - 3500 (2800 - 3500 in RED)
(1200 - 2000 in GREEN)

Centre top - switch (purpose not known)

Key switch under above.

Oil gauge 0 - 6 Kg./cm.² - two switches - lighting

Rotary switch reading O.H., V.I., V.2., V.3.,

Speedometer 0 - 50 Km. Total Reading: 0084.3 Km.

Speeds in gears shown as:

1st = $4\frac{1}{2}$ Km 2nd = 9km. 3rd = 14.75Km
4th = 23.5Km 5th = 38 Km.

Ignition switch and starter button incorporating pilot light.

12. COMMUNICATION

The aerial for the W/T is mounted on the offside front of the superstructure and may be raised or lowered by a lever, operating through a rod and insulated coupling, to the right of the operator.

The cradle for the wireless set (deficient) is mounted under the glacis plate to the right of the gearbox. A rotary converter and suppressor unit is mounted on the floor of the fighting compartment, slightly behind the cradle for the set.

13. OUTSIDE STOWAGE

Provision for the usual accessories is made on the track guards.

14. RECOGNITION POINTS

The tank is very similar to the Pz.Kw.I (Model "A") except that the engine superstructure is higher and extends back further by about one foot, and a separate idler wheel and four instead of three top rollers are fitted.

15. VULNERABLE POINTS

The turret ring joint is particularly vulnerable there being no deflectors fitted for protection.

The roller gun mantlet might possibly be jammed by M.G. or A/Tk. rifle fire.

Air Intakes and Outlets - are identical with those on the Pz.Kw.I S.P. Mounting.

16. IDENTIFICATION MARKINGS

Colour - Putty

German cross on offside of turret, nearside of superstructure and tailplate.

On Traverse gearbox - S. 792

On junction box over wireless set - Fur Ant-Stecker Auber Batterie
L./21

On engine bearer - Motor Nr. 19093. 3791 c. cm.

On Gearbox - ZF.FG.31. Mod. I. 5606 J
Mod. 5605 D