

## 9. AMMUNITION CARRIED

No definite indication can be given owing to damaged and deficient boxes - it would appear to be the same as in the vehicle examined by Messrs. Leylands, i.e. 7.5 cm - 105 rounds.

## 10. TURRET

Of welded construction. Internal diameter 5'1".

The rear is a single curved rolled plate and the roof also a single formed plate. This method of construction reduces the number of welded joints. To the right and forward in the turret roof is a circular opening protected by a circular guard plate beneath which is mounted an electrically driven extractor fan. (Fig. 1).

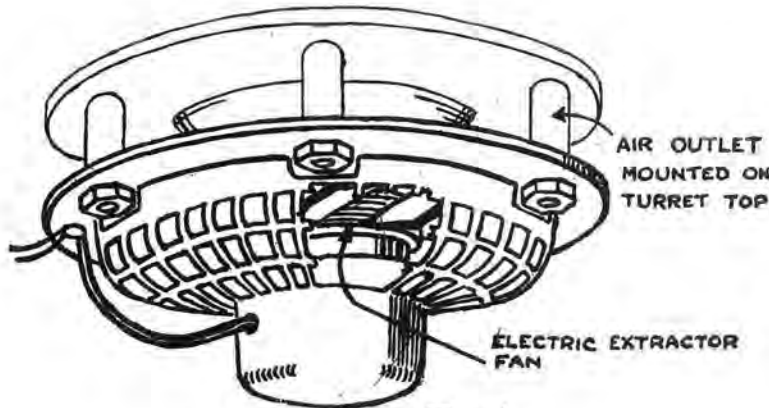


FIG. 1

On the left in the turret roof is a circular signal port of  $5\frac{1}{2}$ " diameter, protected by B.P. cover.

Power and Hand Traverse Gear -  $360^{\circ}$  traverse by hand and power is provided and the floor of the turret rotates and is suspended from the turret ring by 3 tubular brackets. (Fig. 2).

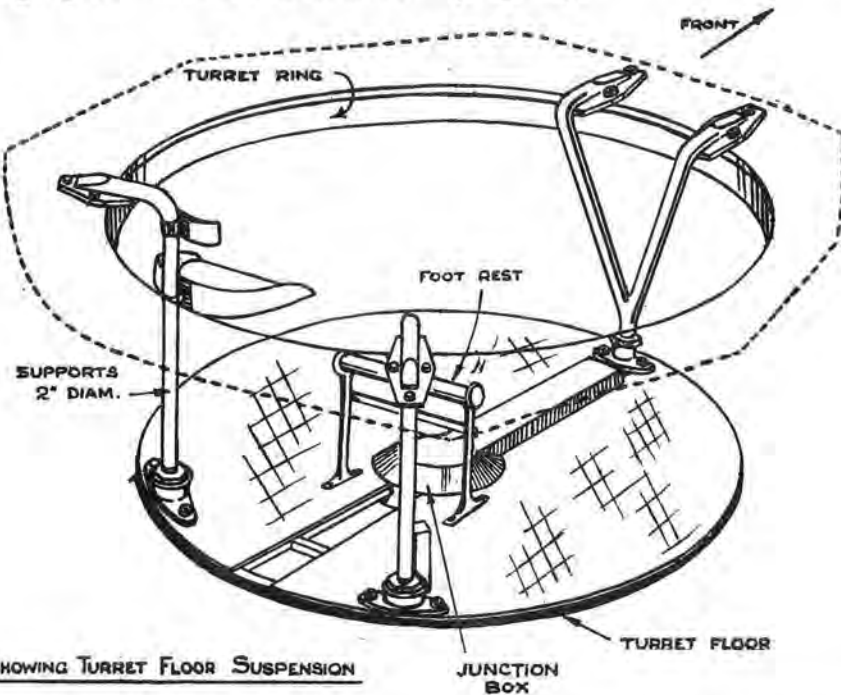
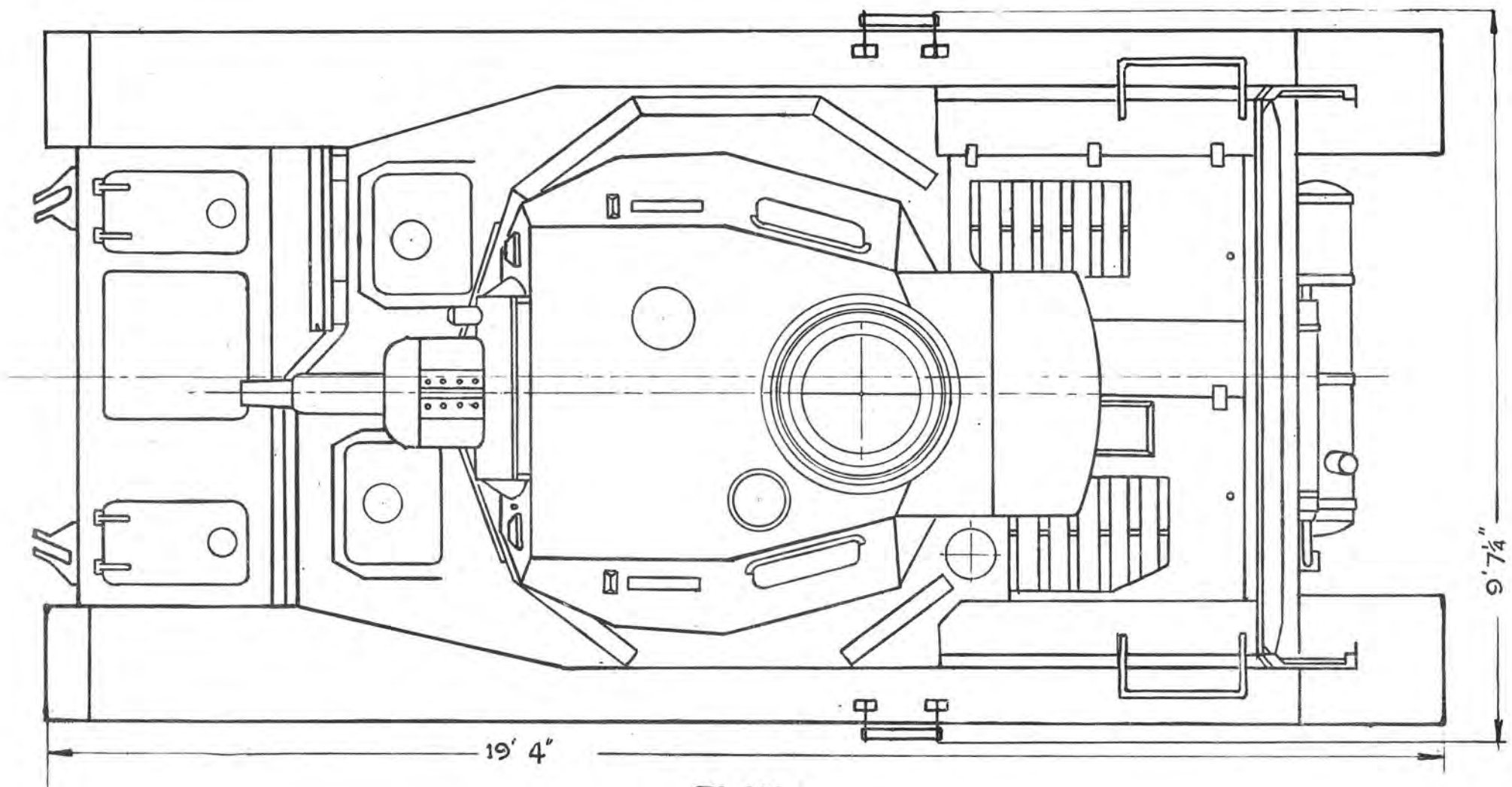


FIG. 2 SKETCH SHOWING TURRET FLOOR SUSPENSION

The electrically operated power traverse gear consists of an auxiliary petrol engine, driving a generator set situated in the near-side of the engine compartment. The electric supply is taken via a rotary junction to the power traverse motor attached to the traverse gear on the left of the turret. The current supply is controlled by a trigger switch on the hand traverse wheel. The controller unit is operated by a chain and sprocket drive from the hand traverse wheel.

Pz. Kw. IV



PLAN

	Pz. Kw. IV
	DRAW <sup>c</sup> N°138
F7	C.G.P. 12/42
	S.T.T. 8/2/6

### Construction

The construction of the weapon is monobloc. It has a detachable breech ring.

### Mechanism

The standard type tank pattern breech mechanism is employed. This has a falling wedge breech block, electric primer firing and semi-automatic operation with the aid of clock springs. Separate springs are used for opening and closing. There are a number of differences between this gun and the 7.5 cm. KwK (Short) and very few parts are interchangeable. In the case of the long and short 5 cm. guns, only the barrels differ.

The principal differences are :

- (i) The operating cam for the mechanical safety switch is further forward on the breech ring.
- (ii) The pencil in the electric firing circuit is of lighter construction and has external insulating bushes.
- (iii) Two large holes are drilled through the lower portion of the breech block for lightness.

### Muzzle Brake

The muzzle brake is of double baffle type, the rear baffle having a renewable insert. It is secured by a locking ring, lockwasher and setscrew.

### Cradle

The cradle is of standard welded construction, similar to that in the Pz.Kw.III with the 5 cm. gun, but longer. The lefthand gun lug is provided with bronze shoes and runs in an anti-rotation guide inside the left side plate of the cradle.

The S.A gear is similar to that for the 5 cm. gun (Pz.Kw.III).

A deflector guard is provided which hinges downwards. It carries no balance weights, but has three fittings for the empty cartridge bag and an adjustable setscrew to operate the deflector guard contacts in the firing circuit.

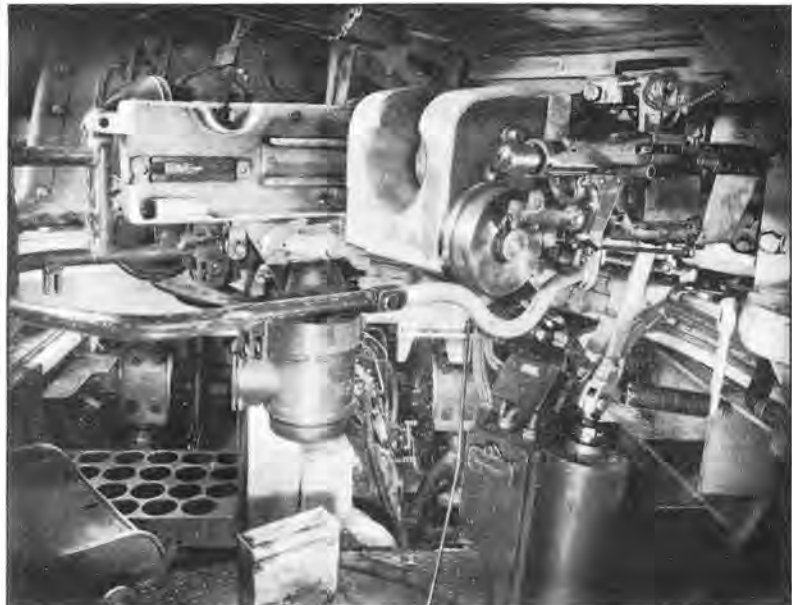


FIG. 2

## SEATING

The design of the commander's seat has been changed. It is not adjustable for height and is mounted on two brackets bolted to the turret ring. It may be folded into any of three positions.

## VISION

The loader's observation port in the offside of the turret front plate, fitted in previous models of the Pz.Kw. III and IV, has been dispensed with.

## IDENTIFICATION AND MANUFACTURER'S MARKINGS

### VEHICLE MARKINGS

The chassis number "83102" is stamped on the front vertical plate under the driver's visor.

A black figure "4" is superimposed on a figure "6" on each side of the turret. The usual German cross is painted at the front and rear and on the superstructure sides.

The weight of the vehicle "22400 Kg" is painted on the stowage bin on the offside track guard. This is preceded by a cross to indicate the centre of gravity.

### MANUFACTURER'S MARKINGS.

On breech ring of 7.5cm. gun

1942 CXR R. 3722 Bs Fl 461  
CXP Vr Fl 273 CXP

On barrel of 7.5 cm. gun

668 - 05004 - 95

On Recuperator

H 589

On Gearbox

(drb) SSG 76 2279/1942

On Change speed lever mounting

32561 drb

On Return roller tyres

CONTINENTAL 250/65 - 135 No. 148  
VORWERK 250/65 x 134 No. 582

On bogie tyres

470/90 - 359 No. 899 CONTINENTAL

On tracks

CKC