

Our thanks to all of you that took notice of our request that 'D' rings **MUST** be used when stringing frames. This is a requirement of our Terms and Conditions of Entry and we have even included a picture of a 'D' ring for your guidance. Exhibits not so fitted and properly strung will be rejected at Handing In. So to the few of you still to follow this rule, please take note.

After considerable controversy over the issue of 'prints' we regret that we have decided not to accept any prints in any shape or form.

Our website continues to provide a simple link for artists to get information about our past events and details and forms for entry to the next exhibition. It is regularly viewed and there is an opportunity for those of you who undertake commissions to advertise your details. A letter inviting you to consider this has been included in the invitation pack (and is on the website) If you would like to take advantage of this service please contact us.

We will be taking a fresh approach to advertising the event this year with more roadside banners, fliers and carefully targeted adverts in journals and local bulletins. We also need to you to spread the word so with the pack we will again be including fliers for you to advertise the event. Please also tell your friends or better still suggest they consider entering the exhibition. Word of mouth is the best way to ensure we get as many visitors to the venue as possible.

For our catalogue we once again need the support of local advertisers. The exhibition team would be delighted to hear from anyone regarding advertising. Sales of catalogues have increased year on year, making it a great place to advertise local enterprises, cottage industries, art classes and perhaps your own artistic enterprise. Please see the website for details.

With regard to sponsorship this too has been restructured and the details of what is on offer are on the website. We appreciate that the current economic climate still puts businesses under pressure but every little helps so if you know someone who might like to support us please let us know.

With your help and support we will once again surprise and delight the public and continue the successes of the past.

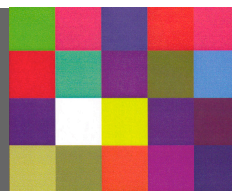
The Lingfield Art Team look forward to welcoming you again this year to participate in what has become, thanks to all of you, the premier art exhibition in the summer social calendar.

Thank you

The Lingfield Art Team

**Exhibition Directors:** Keith Pratt, Annabel Richardson & Ken Farmer  
**Exhibition Team:** Heather Francis, Linda Hughes, Tracy Bell, June Ragsdale, Irene Hinton & Bryan Robinson

# Lingfield Art



email: [lingfieldart@btinternet.com](mailto:lingfieldart@btinternet.com)

web site: [www.lingfieldart.org](http://www.lingfieldart.org)

## 2014 Newsletter

Dear Artist,

Our 2013 Exhibition in July last year was again a resounding success and we thank all of you who participated.

The visitor numbers were buoyant, sales nearly reached the previous years high and thanks to a continued high level of quality work, a record number of entries and our new commission charge, we hope that we have been able to safeguard these exhibitions for the future.

We are now therefore well underway with our plans for 2014 and whilst we now only produce these Newsletters once a year, it does give us a great opportunity to keep you up to date with the development of the Summer Exhibitions.

You will see from the application forms and documents that the 2014 dates for your diaries are as follows:

- **Closing dates** for applications: Thursday 12<sup>th</sup> June.
- **Handing in exhibits:** Saturday 12<sup>th</sup> July ( **NOTE: 10am - 2pm**).
- **Private view evening:** Monday 14<sup>th</sup> July (artists and guests only).
- **Open to the public:** Tuesday 15<sup>th</sup> July until Saturday 19<sup>th</sup> July (10am - 6pm). Sunday 20<sup>th</sup> July (10am - 4pm).
- **Collection of any unsold work:** Sunday 20<sup>th</sup> July (between 5.30pm – 6.30pm).

We are pleased to advise that we are not making any changes this year to the hanging (entry) fees, commission charges or the Terms and Conditions of Entry but again we would ask that you read these carefully before you complete your application. We are pleased that still more new exhibitors have shown an interest in exhibiting as this brings a fresh perspective and style to the event.

Stewarding is again an important requirement of a well-run exhibition and your help is essential to help the public get the maximum benefit from their visit. Good stewarding also safeguards our artists entries and ensures that the visitors to the venue have a good experience, so please take the opportunity to spare at least two hours of your time. We are redrafting and simplifying the guidance notes for our stewards.

Last year we had many more Artists taking part in Art in Action. This activity, where exhibiting artists demonstrate the way they paint or sculpt, is a permanent fixture for the exhibition and really enhances the public's enjoyment of their visit. The sessions are only for 2hrs in the morning or the afternoon, so this year why don't you come along and volunteer to demonstrate your skills. There is a space on the application form for you to indicate when you are free, so please have a go.

**Exhibition Directors:** Keith Pratt, Annabel Richardson & Ken Farmer

**Exhibition Team:** Heather Francis, Linda Hughes, Tracy Bell, June Ragsdale, Irene Hinton & Bryan Robinson