

denote that they are not unique. Mechanically or electronically created reproductions of original work are not acceptable, e.g. Giclee, Lithograph & computer prints”

The Website has proved to be of great interest. You can have your details advertised on the website if you undertake commissions. If you would like to take advantage of this service, please inform us. The exhibition team would be delighted to hear from anyone regarding advertising in next year’s catalogue. Sales of catalogues have increased this year, making it a great place to advertise local enterprises, cottage industries, art classes etc. Sponsorship is important to us. New sponsors will be able to see what we can offer by looking at our website.

The venue has been completely redecorated and new flooring has been laid in the main hall, so it will be in great shape for next year’s 2013 exhibition.

We do hope you enjoyed the show. The success of our Summer Exhibition is largely due to the wonderful quality of individual artists work and the subsequent appreciation of the visiting public. We wish you a very productive, art related winter and look forward to seeing the results of your work at next summer’s event.

Diary dates for the 2013 Summer Exhibition are as follows:

Closing date for applications: Thursday 14th June 2013

Dates for handing in: Saturday 13th July 2013.

Private View evening: Monday 15th July 2013. (artists and guests only)

Open to the public: Tuesday 16th – Sunday 21st July 2013.

Opening times: Tuesday – Saturday 10am – 6pm. Sunday: 10am – 4pm.

Collection of unsold work: Sunday 21st July. 5.30pm – 6.30pm.

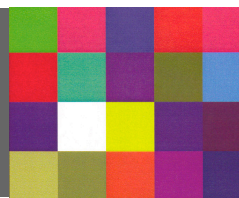
Application Forms, Terms and Conditions of Entry, Invitations and Advice Documents, will be sent to those artists on our mailing list towards the end of March 2013 by post and email.

Thank You

Exhibition Directors: Keith Pratt, Annabel Richardson & Ken Farmer

Exhibition Team: Heather Francis, Linda Hughes, Andy Shattock, Tracy Bell, June Ragsdale, Irene Hinton & Bryan Robinson

Lingfield Art



email: lingfieldart@btinternet.com

web site: www.lingfieldart.org

Autumn 2012 Newsletter

Dear Artist,

Congratulations everyone, the Summer Exhibition was a resounding success. The general consensus of opinion was that the show was the best yet.

We had over 1000 visitors through the door, the sales were up on last year by 55% and the **bid box system** proved extremely popular, the bids received were up by 200%. Many artists, who sold their work through the bid box system, went on to sell more through association, both paintings and sculpture.

Card sales were up on last year by 200%, improved partly by our purchase of another stand and of course the variety and quality of the cards.

Art in Action was well organised this year and added great interest to the show. Thank you to all our artists who took part.

'D' rings: We would like to reinforce that it is a requirement of the Terms and Conditions of Entry, that 'D' rings are used. (These are a flat type of fastening used for fitting the cord on the rear of the painting). Using 'D' rings minimises damage to other paintings and frames when they are stacked.

We also had problems with entries where the fastening and cord on the back were not positioned 1/3 from the top edge of the frame. Where this measurement is not applied, it makes the painting lean out from the display panels and distorts the view the public have of the exhibit.

Mailing List: Please note that we are reviewing our mailing list. Those who have not exhibited for more than five years and have not responded during this period will not receive any further mailings. Due to the spiralling cost of postage, we would appreciate it if those who can receive by email, would advise us accordingly.

Regular exhibitors and those of you that have exhibited in the last five years will of course still continue to receive our newsletters and all forms for the annual art exhibitions.

The website will carry full details and forms for next years show, so if you do not receive either a postal package or email next March you can apply by downloading the forms from the website. If you then enter, your details will be restored on our database in March 2013 and you will remain on our mailing list for a further five years.

Prints: We continue to review how prints are produced and have made some changes to the exhibition Terms & Conditions as follows: "The exhibition seeks to display artwork where the medium has been applied by hand. In the case of Lino cuts, each should be numbered to

Exhibition Directors: Keith Pratt, Annabel Richardson & Ken Farmer

Exhibition Team: Heather Francis, Linda Hughes, Andy Shattock, Tracy Bell, June Ragsdale, Irene Hinton & Bryan Robinson