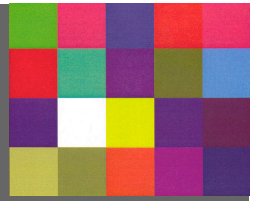


# Lingfield Art



email: [lingfieldart@btinternet.com](mailto:lingfieldart@btinternet.com)

web site: [www.lingfieldart.org](http://www.lingfieldart.org)

## Spring 2012 Newsletter

Dear Artist,

Our thanks go to all of you who participated in our July 2011 exhibition. We hope with your support we will once again surprise and delight the public with the range and quality of your work at the 2012 exhibition this coming summer.

**Closing date for applications:** Thursday 14<sup>th</sup> June. Please enter as soon as possible as we can only accommodate approx. 450 entries and may have to close when the target is reached.

**The dates** for the 2012 exhibition are as follows;

**Handing in exhibits:** **Saturday 14<sup>th</sup> July**, 10am - 2pm. (Please note, these times have changed to give the hanging team more time to place the exhibits.)

**Private view:** **Monday 16<sup>th</sup> July.**

**Open to the public:** **Tuesday 17<sup>th</sup> July - Saturday 21<sup>st</sup> July**, 10am - 6pm.

**Sunday 22<sup>nd</sup> July**, 10am - 4pm.

**Collection of unsold work:** **Sunday 22<sup>nd</sup> July**, 5.30pm – 6.30pm.

**Price change:** Not for sale will be £7 per entry. Exhibits up to and including £49 will be £5 per entry. Exhibits £50 and over will be £7 per entry, not including exhibits that measure 90cm (35.5ins) diagonally or larger, including the frame, these will be £11.

The cost increase is due to the fact that we are now storing our equipment with a commercial provider, whereas before the equipment was stored in garages and lofts in various locations.

**Please note**, to avoid damage to exhibits in the future, all pictures must be fitted with 'D' rings instead of fixings that protrude. Please place the 'D' rings one third from the top of the frame. We may ask you to restring your exhibit if not suitable.

**Art in action:** We hope this year more of you will take part. The sessions run for 2hrs morning and afternoon, with artists demonstrating their skills to the public. Morning: 10am - 12pm. Afternoon: 3pm - 5pm. There will be a space on the application form for this. Please have a go.

**Artist's cards** were very popular again this year. We can now accommodate 20 artists due to the purchase of another card rack.

**Policy on prints:** The exhibition seeks to display artwork where the medium has been applied by hand. Mechanically or electronically created reproductions of original work are not acceptable, e.g. Giclee, Lithograph and computer prints.

**Advertising:** The exhibition team would be delighted to hear from anyone regarding advertising in this year's catalogue. Sales for the catalogue increased last year making it a good place to advertise local enterprises, cottage industries, art classes etc.

**Application forms**, terms and conditions of entry, invitations and advice are all available on our **website: [www.lingfieldart.org](http://www.lingfieldart.org)**

**Exhibition Directors:** Keith Pratt, Annabel Richardson & Ken Farmer

**Exhibition Team:** Heather Francis, Linda Hughes, Andy Shattock, Tracy Bell, June Ragsdale, Irene Hinton & Bryan Robinson