

h•t°

Rob Hotchkiss
T/A Hot Creative

SAMPLE PORTFOLIO



PR Morson



British Independent Utilities (BIU)



Hot Creative



teesloth



Electric Vehicle Group (EVG)



SUP's UP





**ENVIRONMENTAL
JUSTICE FOUNDATION**

**ENVIRONMENTAL
JUSTICE FOUNDATION**



**PROTECTING
PEOPLE & PLANET**





CONTENTS

WELCOME: About us
CASE STUDY: St. James's Place
CASE STUDY: ASMPT
CASE STUDY: WPP Kinetic
CASE STUDY: Agrii
PRODUCT: Content Confidence Kit
PRODUCT: Creation Pack
PRODUCT: Q&A Bot
PRODUCT: Viva Connections Dashboard Tiles
HELLO: Get in touch

FOREWORD

Suzy Dean
CEO &
Microsoft
MVP

I have spent a lot of time with the C-suite this year, both through my 'Interviews with the C-suite' vlog that you can find on the AddIn365 website, and at our IT Leaders' Lunch, a quarterly event that we have begun to run for business and IT decision makers with an interest in digital workplace.

I have learnt that leadership teams are looking to make investments in technology that will reduce the number of mistakes that are made in the organisation. I am told this trumps technology that might allow for a reduction in headcount (existing headcount is priced into budgets already unless cuts have to be made) and is more important than return on investment. How can that be? In short, mistakes cost money and that directly impacts profitability.

Which leads me on to the focus for this year's brochure. AI is everywhere since the launch of ChatGPT at the end of 2022, with many CIOs asking what it's for. Our 2024 edition focuses on four stories that explain how AI has been

St. James's Place make use of AddIn365's AI-powered Content Confidence Kit and Collections experience to ensure their partners give the right financial advice to clients.

WPP's operating company, Kinetic have adopted AddIn365's AI capabilities to turn SharePoint pages into PowerPoint, to support the compliance of their project delivery to clients.

ASMPT have designed and implemented their complex Microsoft Teams governance strategy using AddIn365's Creation Pack product, to ensure all their content is secure – including that of their global R&D teams who design and iterate their multi-billion dollar products. The Creation Pack uses AI to apply the right governance to Microsoft Teams without the need for employee action.

Agrii are using AddIn365's AI Viva Connections Dashboard Tiles to deliver dynamic job guides to agronomists that are literally out in fields, advising farmers on crops appropriate to the soil.

ABOUT US

OUR CLIENTS INCLUDE:

AddIn365 are a London-headquartered Microsoft Charter Partner, recognised as one of the best partners globally for Business Applications and Content Services solutions by Microsoft.

AddIn365 are specialists in delivering digital workplaces on Microsoft 365; from productivity solutions that leverage AI and the Power Platform to communications capabilities that leverage Viva, SharePoint and Teams.

AddIn365 is home to three experts in workplace tech: Suzy Dean, Wes Hackley, Schaefflein – who all hold MVP status. The MVP award is studied for; it is awarded by Microsoft Product Groups to a few thousand people in a community of more than 100,000 practitioners.

Our expertise is why the biggest brands trust AddIn365 to deliver their digital workplace on Microsoft 365.



How do you use AI to ensure clients get the best possible experience of your products?

CASE STUDY
St. James's Place

CONTEXT
Following years for over 30 years, St. James's Place had moved its core business to the cloud. The new digital workplace was a complex one, with many different products and services. The challenge was to ensure that the new digital workplace was easy to use and that it provided a consistent experience for all users.

THE REQUIREMENTS
St. James's Place needed a solution that could help them manage their content and ensure that it was secure and compliant. They needed a solution that could help them manage their content and ensure that it was secure and compliant.

ABOUT AGRII
Agrii is a leading provider of digital workplace solutions. They have helped many organisations to improve their digital workplace experience and ensure that it is secure and compliant.

How do you use AI to architect a site for employees that each have unique requirements?

CASE STUDY
Agrii

THE NEED
Agrii needed a solution that could help them manage their content and ensure that it was secure and compliant. They needed a solution that could help them manage their content and ensure that it was secure and compliant.

CONTEXT DRIVEN EXPERIENCES
Agrii provided a solution that could help them manage their content and ensure that it was secure and compliant. They needed a solution that could help them manage their content and ensure that it was secure and compliant.



How to set up an OA nurse clinic:

All the tools and tips you need

VetPlus

Your Pet's Osteoarthritis PLAN

VetPlus The Global Leader in Veterinary Nutraceuticals

Triple Action Wound Salve

A fast-acting skin salve that promotes:

- Antimicrobial effects
- Angiogenesis support
- Increased epithelialization

Contains Norwegian spruce resin to aid the wound healing process

- Does not dissolve easily when licked
- For use on cats and dogs

CONTACT VETPLUS ON: 0800 867 283 vetplus.co.uk

100% DEDICATED TO VETERINARY NUTRACEUTICALS

VetPlus The Global Leader in Veterinary Nutraceuticals

The **FIRST** veterinary Medium Chain Triglyceride supplement

APRYLIC

• The ONLY veterinary MCT supplement to help support brain health in dogs and cats

- Helps to provide an alternative energy supply to the brain
- Can support in cases where glucose metabolism in the brain is impaired
- Used as part of a multimodal approach to support brain health

Speak to your nearest VetPlus Area Sales Manager: 0800 867 283 vetplus.co.uk

VetPlus The Global Leader in Veterinary Nutraceuticals

These paws were made for walking... exploring... playing... running... jumping...

SYNOQUIN

Aid movement in dogs, cats and growing puppies

VetPlus Help them to help themselves



COATEX

We've got your pet's skin and coat covered...

Soothe Replenish Protect

COATEX

To find out more speak to your vet or visit: www.vetplus.co.uk

COATEX

We've got your pet's skin and coat covered...

Soothe Replenish Protect

COATEX

To find out more speak to your vet or visit: www.vetplus.co.uk

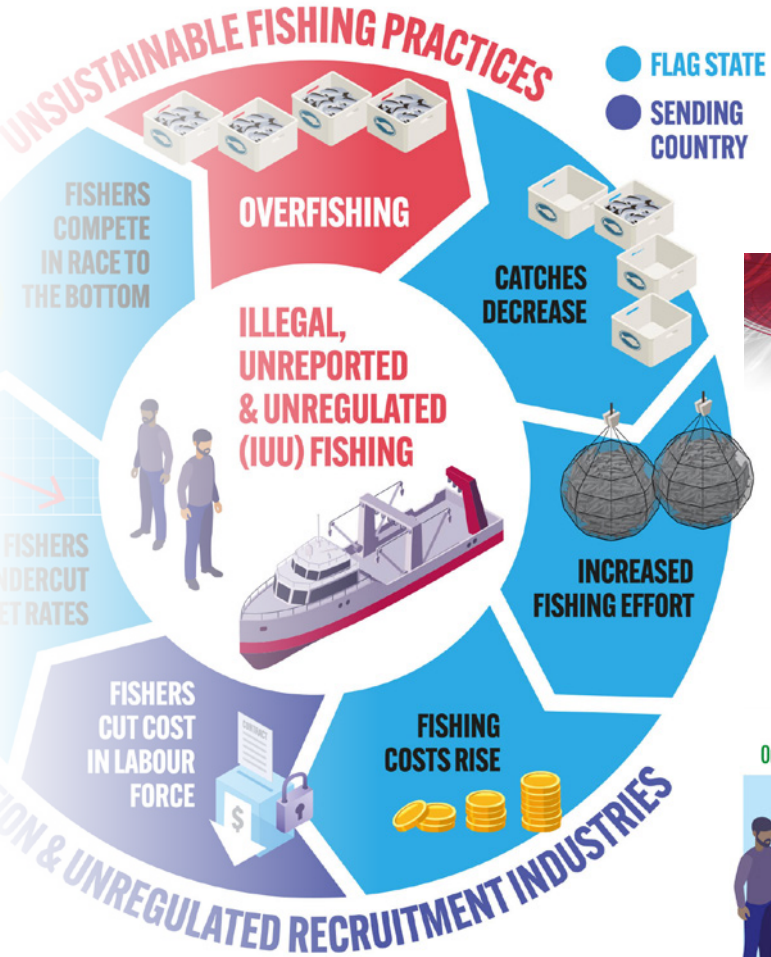
COATEX

We've got your pet's skin and coat covered...

Soothe Replenish Protect

COATEX

To find out more speak to your vet or visit: www.vetplus.co.uk



Transport and urban planning face significant challenges

Poor scheduling & overcrowding
COVID Recovery
Refranchising
Changing Patterns
EV Charging
Decarbonisation

A modern rail network requires an ambitious approach to decarbonisation, climate change adaption and data driven transformation.

Mobile Network Data

*“kelly morris (@kellymorris) · Feb 2
@railengland 37.9k Liverpool by Caledon seriously overcrowded again, we deserve better greater Anglia. Someone will get hurt soon, more trains please!”*

The National Strategic Plan for Rail, May 2021

www.citilogik.com © Citi Logik Limited 2022

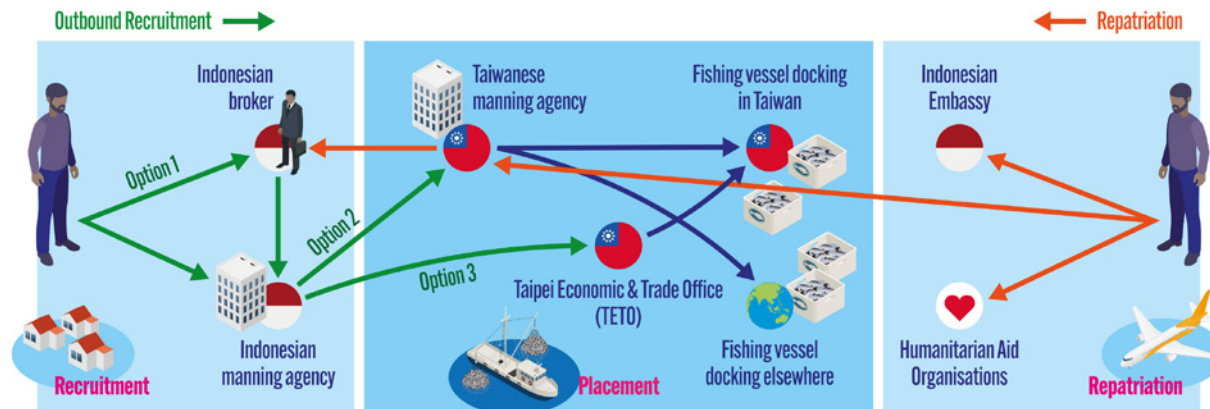
Use Case: EV Charging Locations

Challenge: Identify the best location for EV chargers

- Existing data sources
- Huge investment in new locations
- Analysis report generated by site
 - Traversing flows
 - Densities
 - Cumulative distance
 - Competing rapid chargers
 - Local EV penetration
- Positively received by operators
- Next step: blend utilization data to forecast potential new site ROI

Analysis Report: EV Charger Location

www.citilogik.com © Citi Logik Limited 2022





GREYROCK

SAUVIGNON BLANC
2015

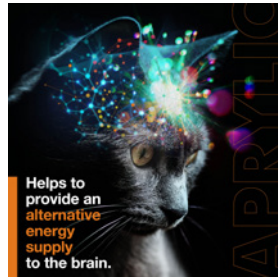


MARLBOROUGH



Digital design

VetPlus Nutraceuticals
Christ the Good
Shepherd RC Parish



Helps to provide an alternative energy supply to the brain.



Website Sacraments Stills/Media Contact

Parish Prayer

Come, Holy Spirit! Give us the grace today to rise up, to open wide the doors, to go out of ourselves so as to draw others to Christ, to be disciples and to make disciples, that we may walk in your ways joyfully and build up Your Church across West Cumbria. We make this prayer through Jesus Christ our Lord. *Amen.*



Welcome

Serving the areas of Workington, Harrington and neighbouring villages – The parish of Christ the Good Shepherd, formed 2012, is made up of the Catholic churches of Our Lady Star of the Sea & St Michael's, St Gregory's and St Mary's.

Mass Times



St. Mary's, Harrington
Saturday Vigil 6.00pm

[View details for St Mary's](#)



St. Gregory's, Westfield
Sunday 9.30am

[View details for St Gregory's](#)



Our Lady & St Michael's
Sunday 10.30am & 6.00pm

[View details for Our Lady & St Michael's](#)

If you are interested in learning more about Catholicism, have a question, or would like to speak to a priest? Please get in contact.

Watch Mass Live

Click on the link to view

[Our Livestream](#)

Newsletters



Christmas Card
with Christmas Cards & Trise



Christ the King
Vigil



33rd Sunday in Ordinary Time
Vigil

News



Christmas Card
with Christmas Cards & Trise



Christ the King
Vigil



33rd Sunday in Ordinary Time
Vigil

32nd
Vigil

News



A Short History of Stained Glass

[Read](#)



Breathing New Life into our Pipe Organ

[Read](#)



Lake District Pilgrimage

[Read](#)



A Jou

[Read](#)

Our Lady Star Of The Sea & St. Michael, Banklands.

The parish began life in 1810 when the Benedictines established a chapel on land donated by the Curwen Family. In 1876, the present church was built to a design by E.W. Pugin and the original chapel became Banklands church hall. Apart from reordering the sanctuary area in 2001, it remains unaltered. The parish was staffed by the Benedictine monks of Ampleforth Abbey until 2009, when it was handed over to the Diocese of Lancaster.

Saint Gregory, Westfield.

The parish of St Gregory was founded in late 1964 in response to the expansion taking place in Westfield. Fr John Harrison was the first parish priest. Initially Mass was said in the local Community Hall. Then in 1966 a Church Hall was built and Mass was said there until 1982. In October 1982 the present church was completed and October 13th 1982 was consecrated by Bishop Pearson.

Saint Mary, Harrington.

St Mary's Harrington began life as a daughter church of Our Lady & St Michael around 1872. At that time Harrington was growing rapidly and there was need for a new parish. St Mary's became a parish in its own right in 1884 and the present church was built in 1892. The parish was served first by monks from Ampleforth and later from Belmont Abbey. In 2001 Belmont Abbey handed over the parish to the Diocese of Lancaster.

We are a Roman Catholic parish belonging to the Diocese of Lancaster and we are part of the the Cumbrian Martyrs Deanery. Our parish priests are Fr Philip Conner assisted with Canon John Watson and our parish Sister Volunteer is Eleanor Gilligan from the Sister of Charity of St. Paul.

If you wish to get in contact, please feel free to give us a call or fill in the email form on the contact page.

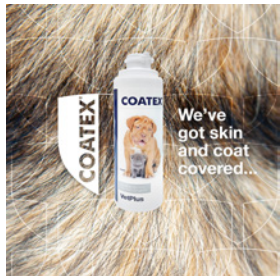
[Get in touch](#)



COATEX



We've got skin and coat covered...



COATEX



We've got skin and coat covered...



Did you know?

Fatty acids improve your pet's skin.



APRYLIC is the only UK veterinary supplement containing key Medium Chain Triglycerides (MCTs) to help support brain health.

