

# ARTISTS in ACTION Harrogate

## Alice Fox

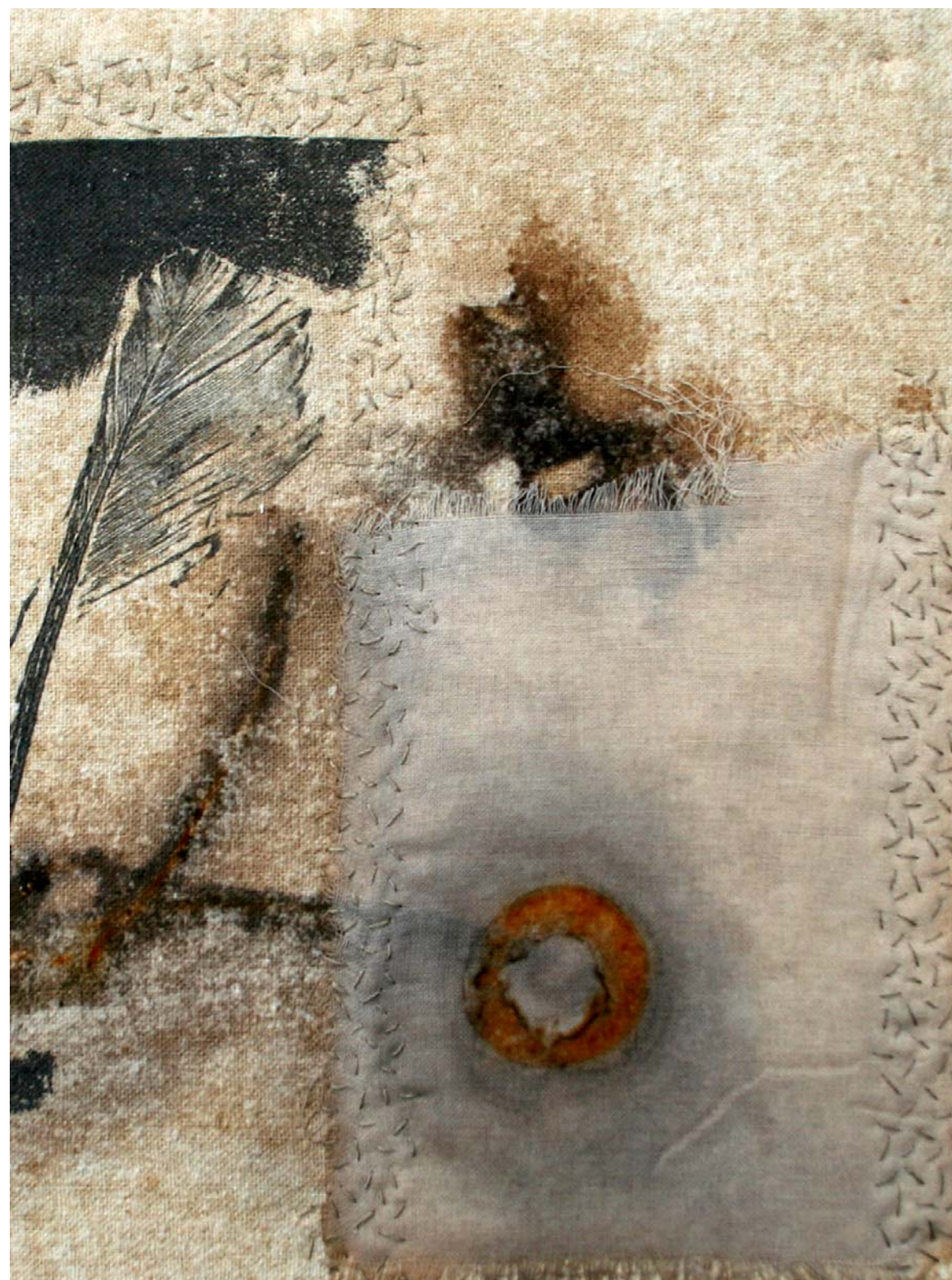
Alice's practice brings together observation, recording and interaction with landscape. Her work is informed by the detail of the natural world and the objects and materials she collects whilst walking.

Alice works with natural fibres (paper, cloth and thread) and uses natural dye techniques, print, stitch and weave in different combinations. Her work develops through layering up marks and textures, building up subtle surfaces and structures that combine the textural qualities of textile and printmaking processes in unconventional ways. Found items form the focus of Alice's response to a landscape. She takes an experimental approach to these found items: by engaging with the materials, manipulating them and experimenting, Alice learns about their properties, boundaries and possibilities. Alice uses found items to make marks, allowing them to stain the fibres and stitches that she surrounds them with.

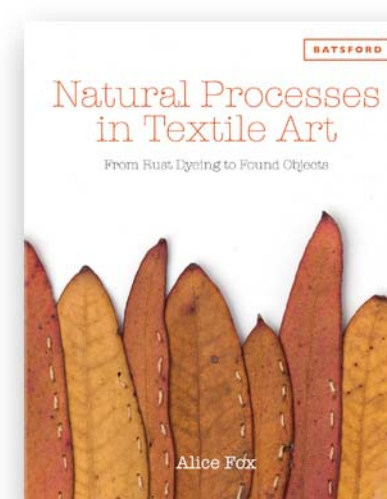
Alice graduated with a first class honors degree in Contemporary Surface Design & Textiles from Bradford School of Arts & Media in 2011. She was joint winner of the Quilters' Guild Student Bursary at the Festival of Quilts in 2011. Alice was awarded Silver in the Craft & Design Selected Maker Awards 2014 and was a finalist in 2015. Alice exhibits nationally and internationally and is a member of the Textile Study Group and The Society of Designer Craftsmen



[www.alicefox.co.uk](http://www.alicefox.co.uk)



Alice's book *Natural Processes in Textile Art* was published in 2015 by Batsford.



### Recent Exhibitions

- The Language of Objects*, Unit Twelve Gallery, Stafford until 19<sup>th</sup> December 2015)
- Leaf Stitching*, SDC Gallery, London (2015)
- Here & There*, Art Van Go (2015)
- Meticulous Stitchers*, Unit Twelve Gallery, Stafford (2015)
- European Art Quilt VIII* (2014-16)
- Tide Marks* – ACE funded tour: Grimsby, Stroud (SIT Select), Hull, London (2013-14)
- Coded: Decoded: Prism* at The Mall Galleries, London (2014)
- Textures of Spurn* - ACE Funded residency & tour: Spurn NNR, Barton-u-Humber, Bridlington, Leeds, Beverley (2012-13)
- Gifts from the Pavement*, Saltaire Arts Trail (2013)
- Industrial Abstract*, The Beetroot Tree, Draycott (2013)
- A Personal perspective on landscape:* Craft in the Bay, Cardiff (2013)
- European Art Quilt VII*, UK, (2012-14)