

# ARTISTS in ACTION Harrogate

## Alison Hulme

Alison Hulme is a practising textile artist whose current focus is on print and the written word. The fascination for this stems from her dyslexia and expressing herself by including text in her art work has given her mastery over writing which she did not have before.

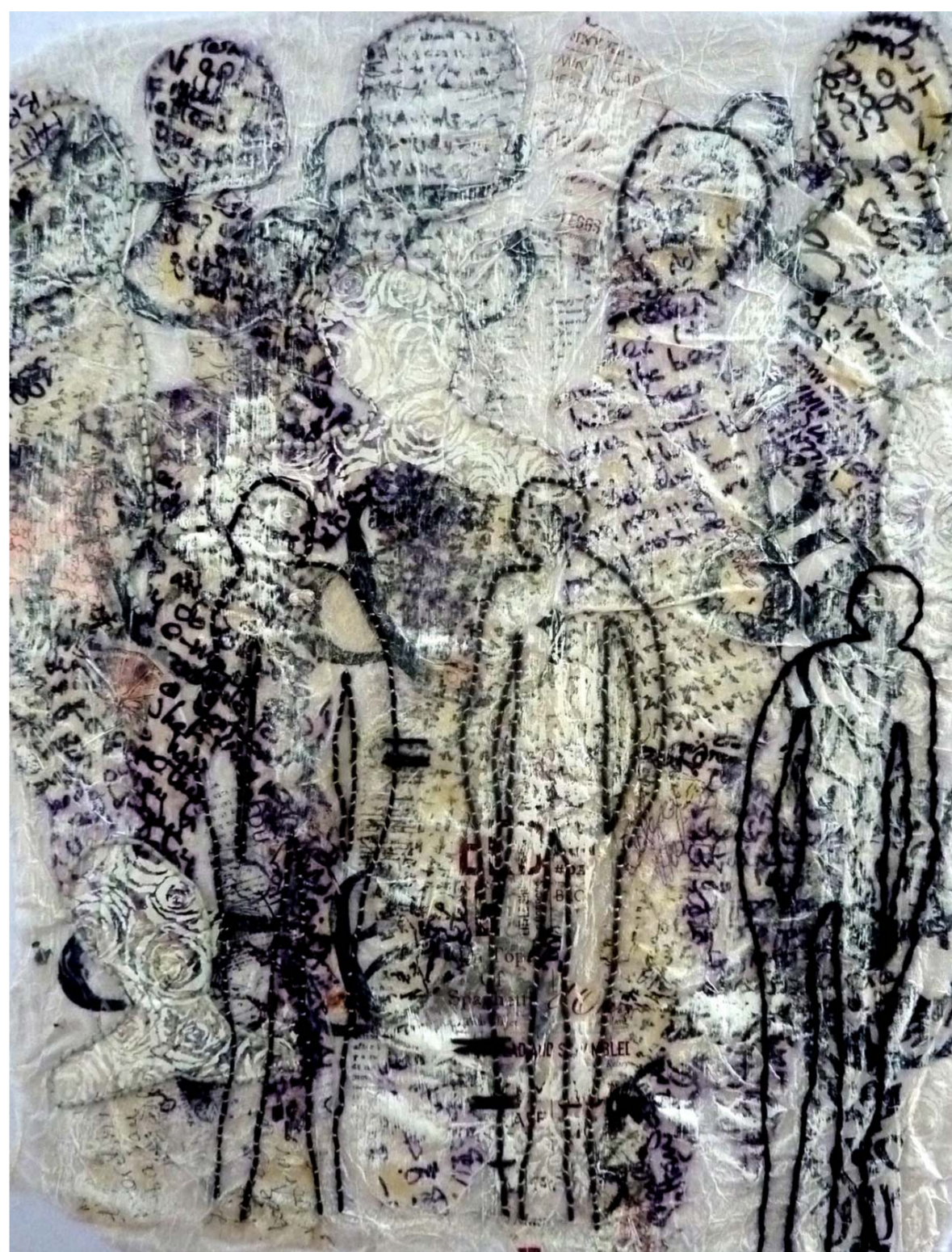
Her current work reflects her love of form and function, so she makes pinny's!

Each pinny is unique, a length of material is individually printed for each piece of work. The processes Alison uses are multi-layered screen printing, gelatine plate printing and machine embroidery.

Alison Hulme is a Licentiate of the Society of Designer Craftsmen



[www.alisonhulmetextiles.wordpress.com](http://www.alisonhulmetextiles.wordpress.com)  
[alisonhulmetextiles@gmail.com](mailto:alisonhulmetextiles@gmail.com)



### LATEST EXHIBITIONS

**Stitched** - Romsey Abbey – Oct 2015  
Graduates from Eastleigh College

### Zeronine Textiles

Sir Harold Hillier Gardens - Aug 2015

### PREVIOUS EXHIBITIONS

#### Physic Gardens

High Street, Petersfield - Oct 2014

#### Eastleigh College Graduate Show

- July 2013

#### Editions of Ten

Winchester Art Community - 2013

#### Designer Craftsmen Shop

Mall Galleries, London - 2013